

**KBT****4720~4820MHz 65° 11dBi  
MIMO Directional Panel Antenna****KDP4-D49BFO****Application**

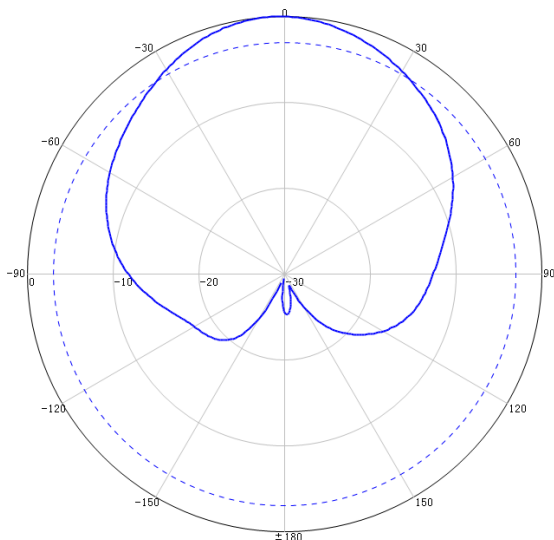
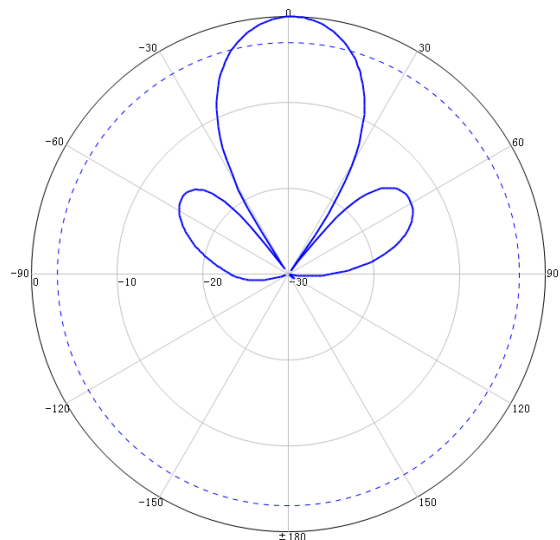
Used in 5G/WLAN system

**Electrical specifications**

Frequency range (MHz)	4720~4820
Polarization	$\pm 45^\circ$
Gain (dBi)	11
Horizontal beam width ( $^\circ$ )	$\geq 65$
Vertical beam width ( $^\circ$ )	$\geq 35$
Isolation (dB)	$\geq 20$
Front-to-back ratio (dB)	20
Impedance ( $\Omega$ )	50
VSWR	$\leq 1.6$
Maximum power (W)	50
Lighting protection	DC Ground

**Mechanical specifications**

Connector	4*N Female
Exposed cable size (cm)	20(or customer requirement)
Connector position	Bottom
Antenna size (mm)	172*92*18
Weight (kg)	$\leq 0.4$
Radome material	ABS
Radome color	White
Operating temperature ( $^\circ\text{C}$ )	-40~60
Application	Indoor
Mounting	Wall Mounting
Waterproof	IP44

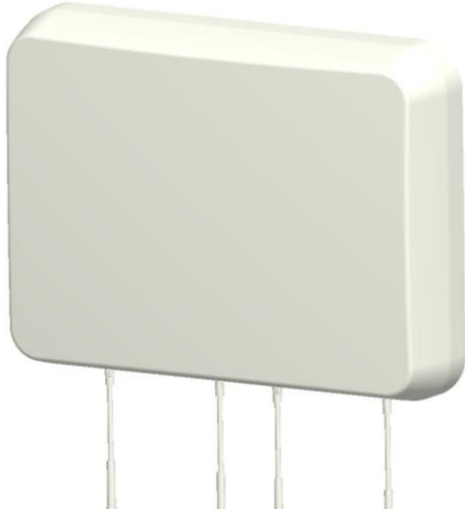
**4720~4820MHz Horizontal pattern:****4720~4820MHz Vertical pattern:**



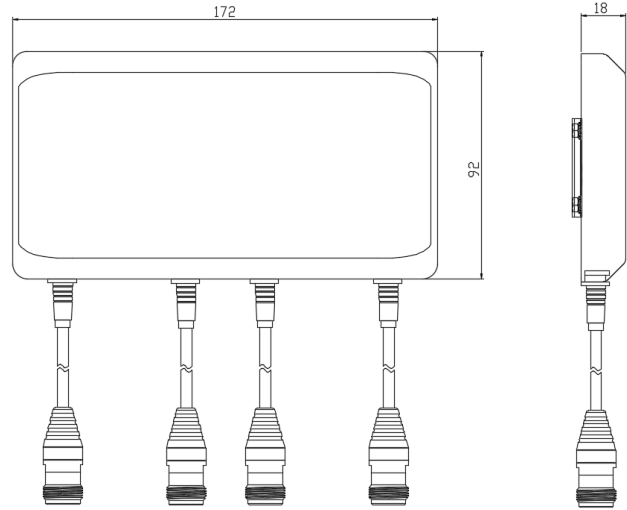
**KBT**

4720~4820MHz 65° 11dBi  
MIMO Directional Panel Antenna

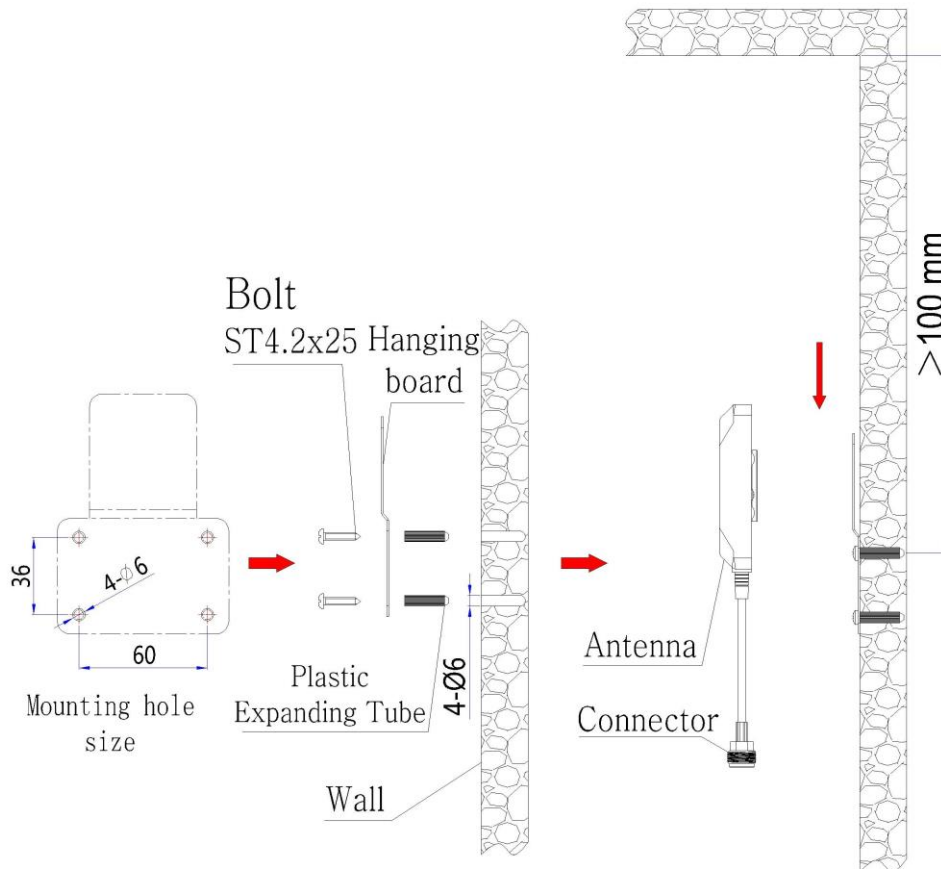
### Product pictures



### Product size



## Installation Sketch



- 1.Position and fix the mounting plate onto the wall with the countersunk self-tapping screws ST4.2x25 and plastic accessories.
- 2.Finish the installation by matching the clamp piece on the antenna base plate to the mounting plate hanger.